



Rotherhithe Street, London, SE16 5DJ
Offers in excess of £460,000



Concierge Service!

A well presented two double bedroom modern apartment in this sought after development on Rotherhithe Street. A perfect City base or London home for those seeking a service apartment. Call Town and City Homes today to book your viewing.



Stanton House is a sought after development with concierge service, located just a four minute riverside stroll from the Hilton River Bus service to Canary Wharf and ideally located for the Rotherhithe Street bus links, Surrey Docks Farm, the Outdoor Gym, Hilton Pier and the hotel's gym facilities. Surrey Quays Overground Station, Canada Water Underground Station are nearby as well as the Stave Hill Ecological Park which is very popular with the locals.

Terms of Lease - .
Created 01-09-2001 for 124yrs
Years remaining - 103yr
Service Charge - £2300 pa
Ground Rent - £250 pa

Call Town and City Homes today to book your viewing.

Entrance Hall

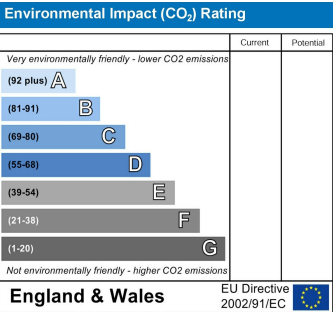
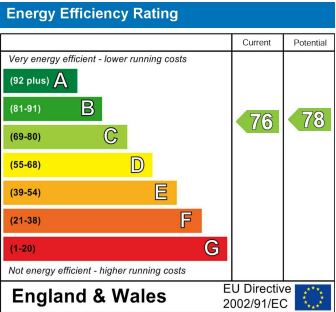
Living Kitchen Dining 25'7 x 10'4 (7.80m x 3.15m)

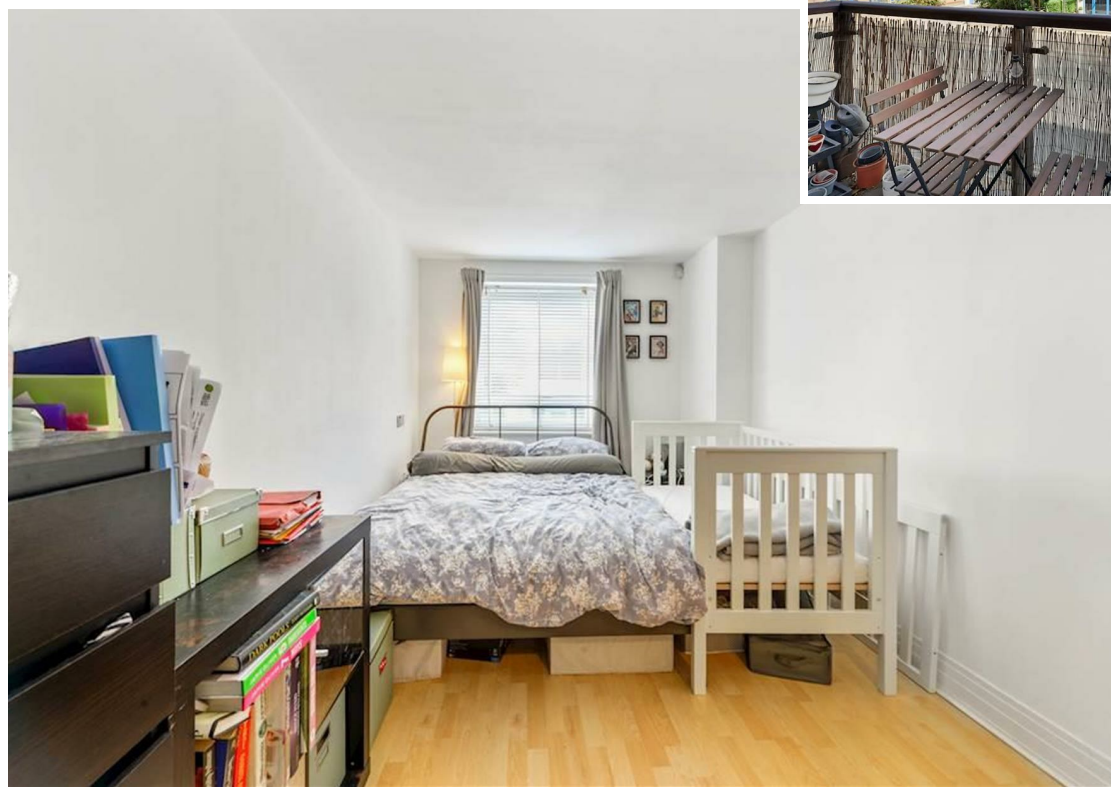
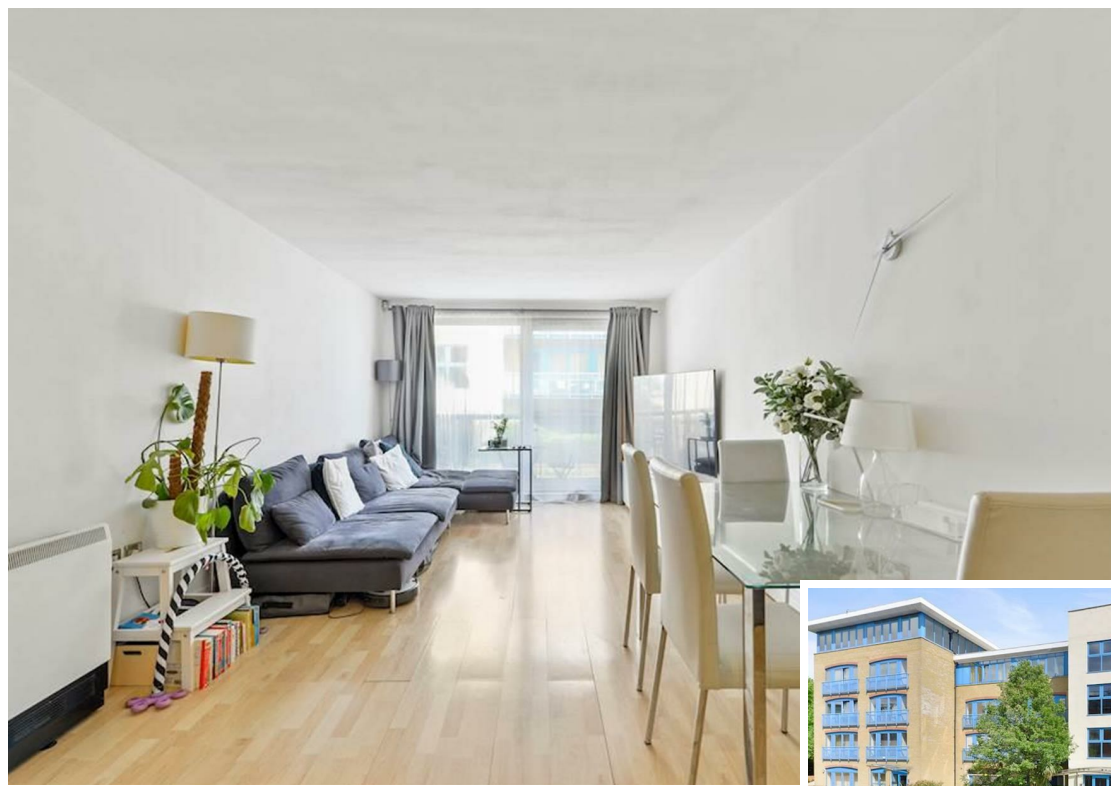
Balcony 8'6 x 2'10 (2.59m x 0.86m)

Bedroom 1 17'10 x 8'8 (5.44m x 2.64m)

Bedroom 2 14'4 x 8'7 (4.37m x 2.62m)

Bathroom 7'5 x 6'8 (2.26m x 2.03m)









FIRST FLOOR
GROSS INTERNAL
FLOOR AREA 723 SQ FT

APPROX. GROSS INTERNAL FLOOR AREA 723 SQ FT / 67 SQM	Stanton House
Disclaimer: Floor plan measurements are approximate and are for illustrative purposes only. While we do not doubt the floor plan accuracy and completeness, you or your advisors should conduct a careful, independent investigation of the property in respect of monetary valuation	date 11/05/22
	photoplan